

# G304

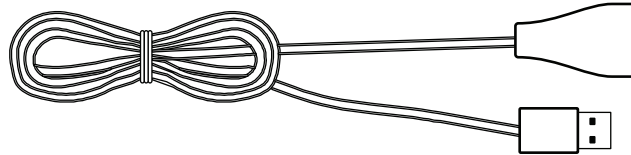
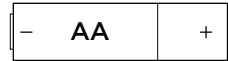
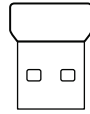
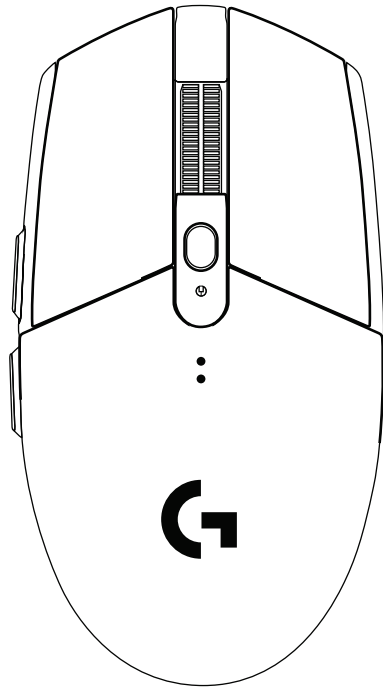
LIGHTSPEED Wireless Gaming Mouse | LIGHTSPEED 无线游戏鼠标

LIGHTSPEED 無線遊戲滑鼠 | LIGHTSPEED 무선 게이밍 마우스

SETUP GUIDE | 设置指南 | 設定指南 | 설치 가이드



logitech ™



**logitech** 

Important Safety, Compliance and  
Warranty Information  
重要安全性、合規性和质保信息  
重要安全性、合規性和保固資訊  
중요 안전 규정, 준수 사항 및 보증 정보

ENGLISH . . . . . 3

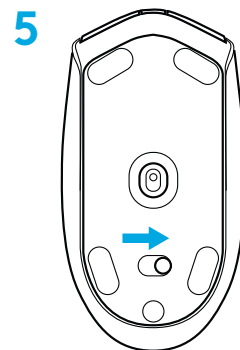
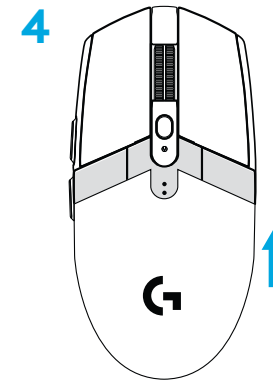
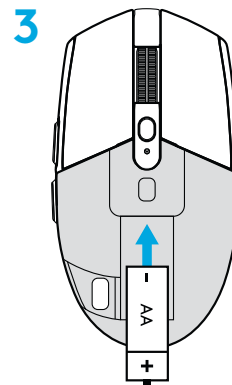
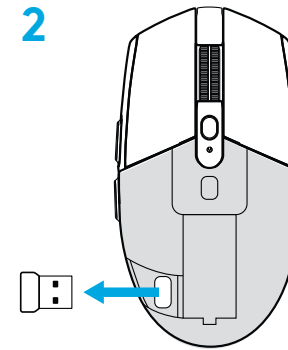
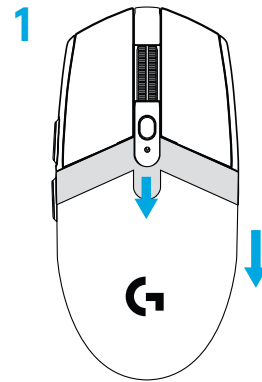
简体中文 . . . . . 8

繁體中文 . . . . . 13

한국어 . . . . . 18

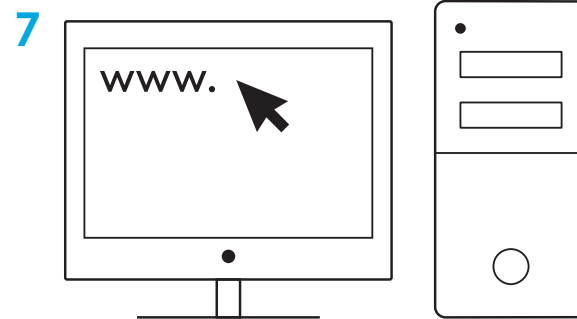
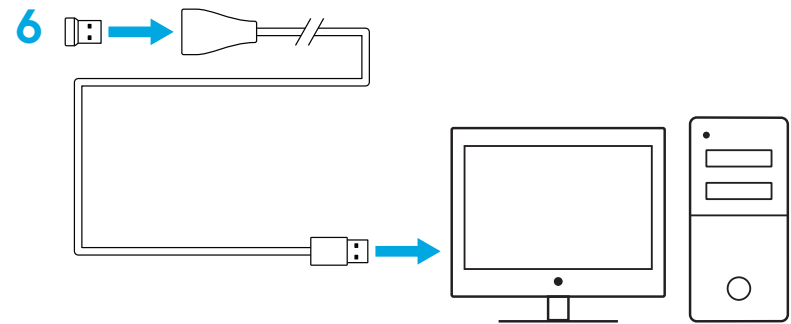
# SETUP INSTRUCTIONS

- 1 Remove the battery cover by pressing the top of the cover and pulling it downwards
- 2 Remove the receiver
- 3 Insert the battery
- 4 Close the battery cover
- 5 Make sure the mouse is turned on via the switch on the bottom of the mouse



**6** Recommended: Insert receiver into the receiver extension cable. Insert extension cable into your USB port. Alternatively, insert receiver directly into your USB port

**7** Download the G HUB software

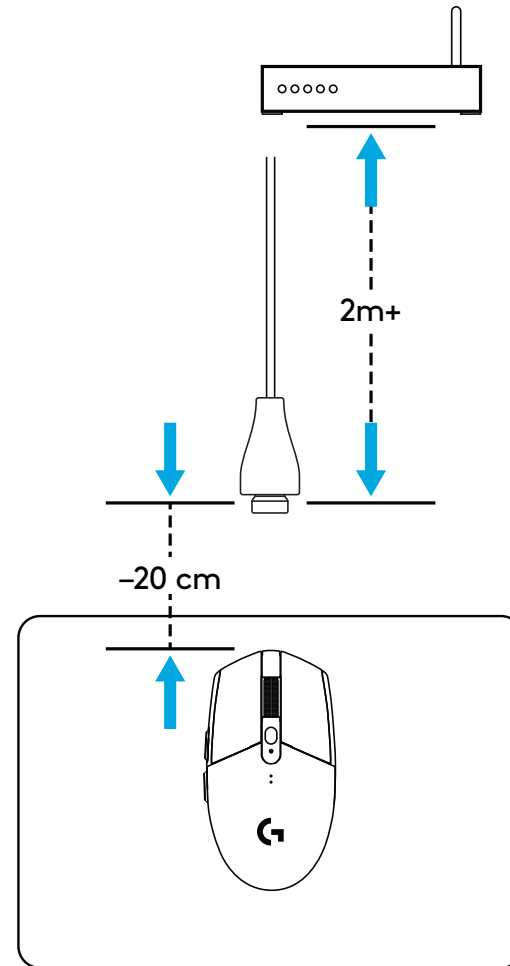
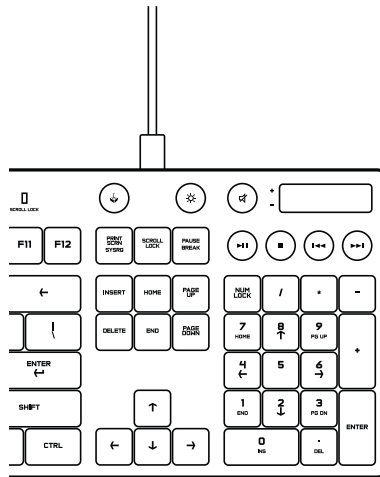


[logitechG.com/GHUB](http://logitechG.com/GHUB)

[logitechG.com/support](http://logitechG.com/support)

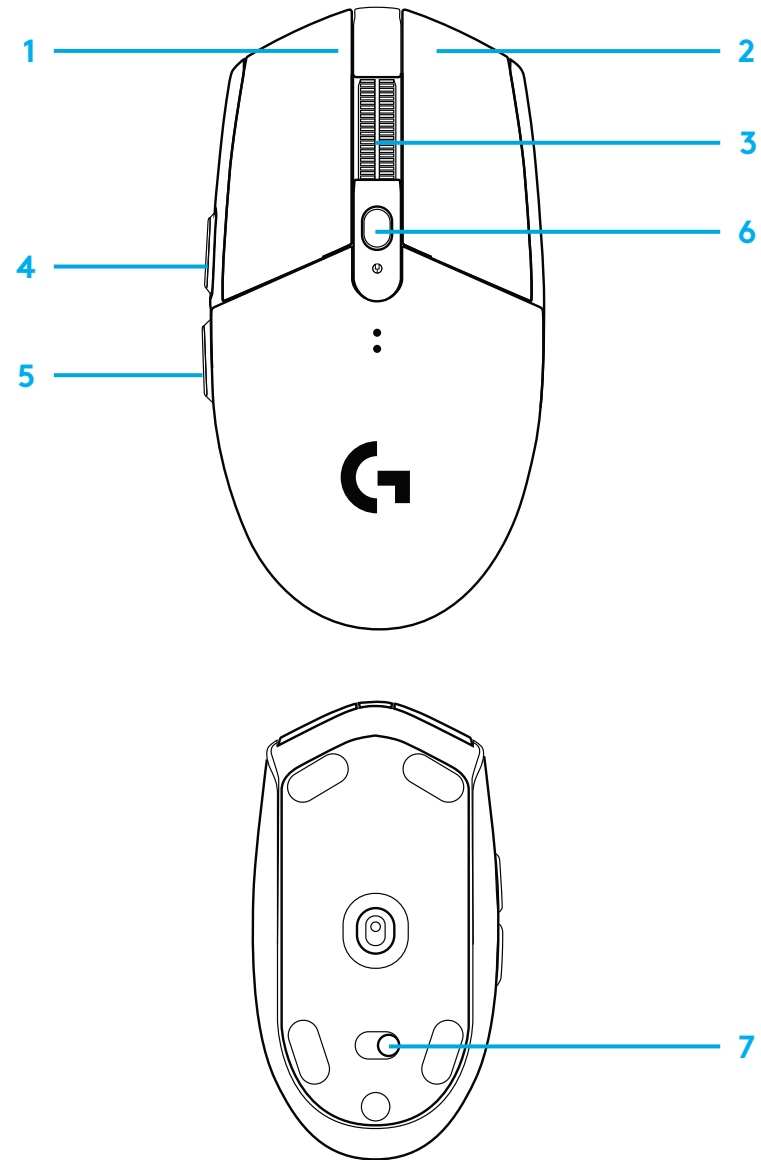
## Tips:

- To make your mouse lighter, a lithium AA battery (not included) can be used.
- Keep the mouse and receiver 2 m+ away from wireless routers or other 2.4GHz wireless devices to minimize environmental noise.
- G304 / G305 has a wireless range of up to 10 meters. To ensure optimal performance in noisy wireless environments, it is recommended to keep the receiver within 20 cm of the mouse.



## 6 FULLY PROGRAMMABLE BUTTONS

- 1 Left (Button 1)
- 2 Right (Button 2)
- 3 Wheel click (Button 3)
- 4 Forward (Button 4)
- 5 Back (Button 5)
- 6 DPI cycle (Button 6)
- 7 On/Off switch (bottom of mouse, not programmable)



# LED INDICATOR

## Battery life

**Flashing red:** battery <15%

## DPI

**Yellow:** step 1 - 400 DPI

**White:** step 2 - 800 DPI (default)

**Orange:** step 3 - 1600 DPI

**Magenta:** step 4 - 3200 DPI

**Blue:** step 5 - 6400 DPI (Step 5 can be activated via software only)

## Mode

**Cyan:** performance mode (default)

**Green:** endurance mode (can be activated via software only).

## Tips:

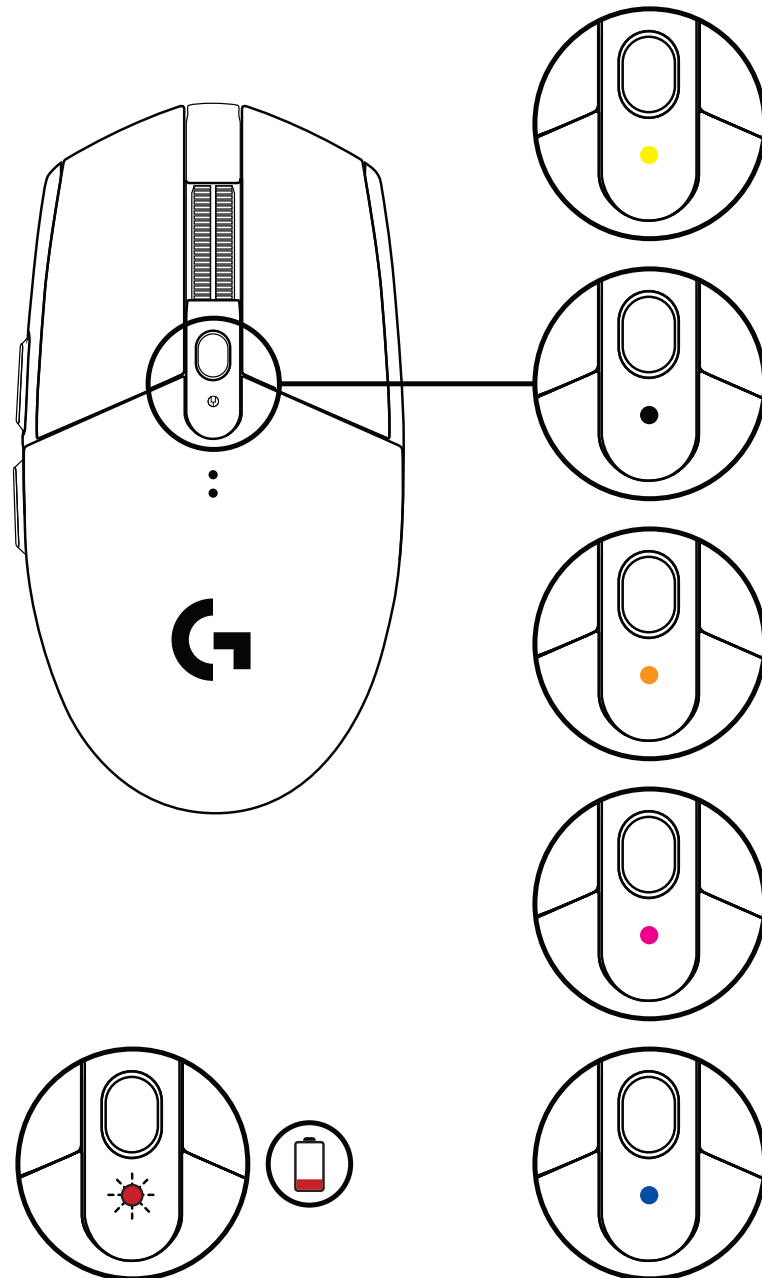
- Activating endurance mode will degrade tracking performance but improve battery life.

# G HUB SOFTWARE

You can customize the onboard profile settings using the G HUB. These settings include button programming, report rate, performance/endurance modes and tracking behavior. G304 / G305 allows up to 5 DPI settings.

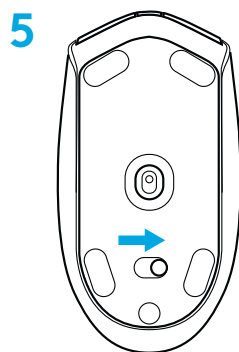
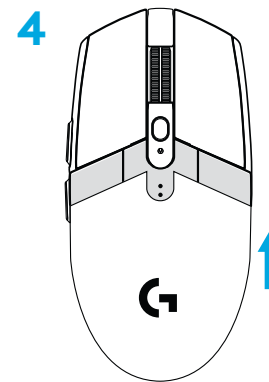
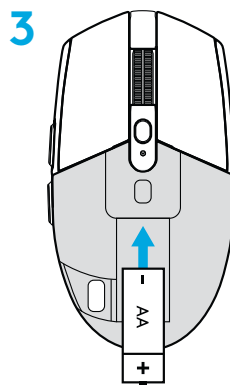
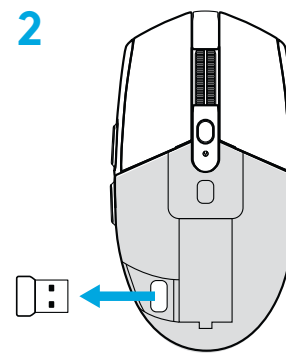
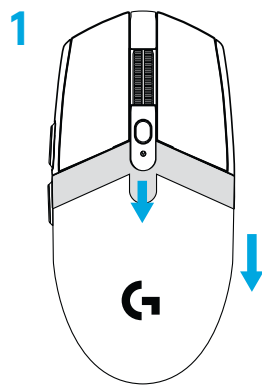
By default, G304 / G305 has the following settings:

- DPI: 400/800/1600/3200
- Report rate: 1ms
- Performance mode



# 设置说明

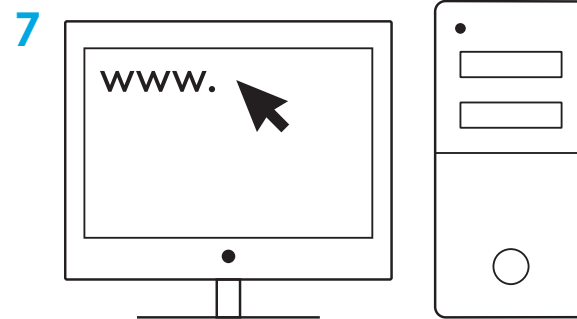
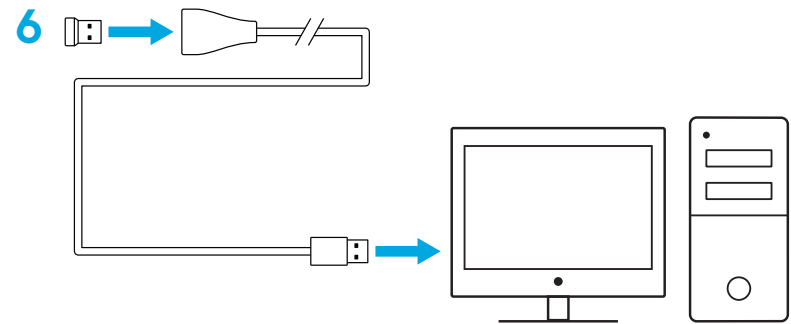
- 1 轻按顶盖并向下拉动, 取下电池盖
- 2 取出接收器
- 3 安装电池
- 4 关闭电池盖
- 5 使用鼠标底部开关开启鼠标电源





6 建议: 将接收器插入接收器延长线。将延长线插入 USB 端口。  
也可将接收器直接插入 USB 端口

7 下载 G HUB 软件

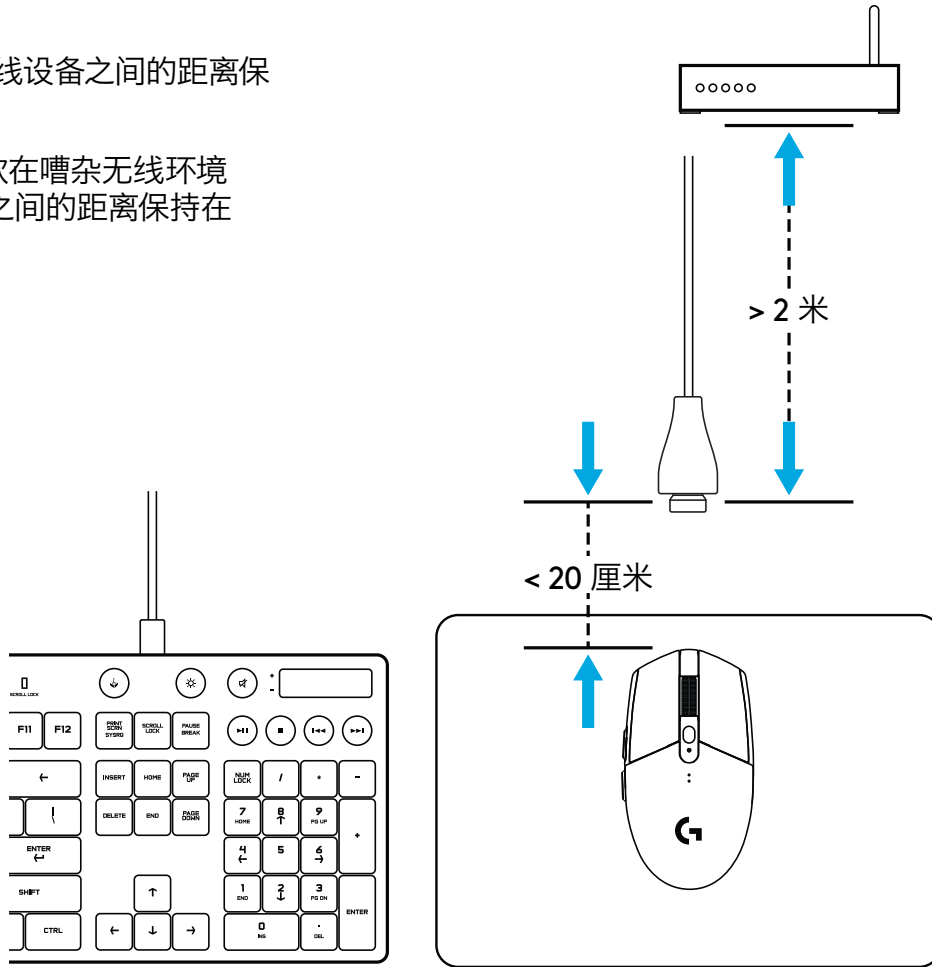


[logitechG.com/GHUB](http://logitechG.com/GHUB)

[logitechG.com/support](http://logitechG.com/support)

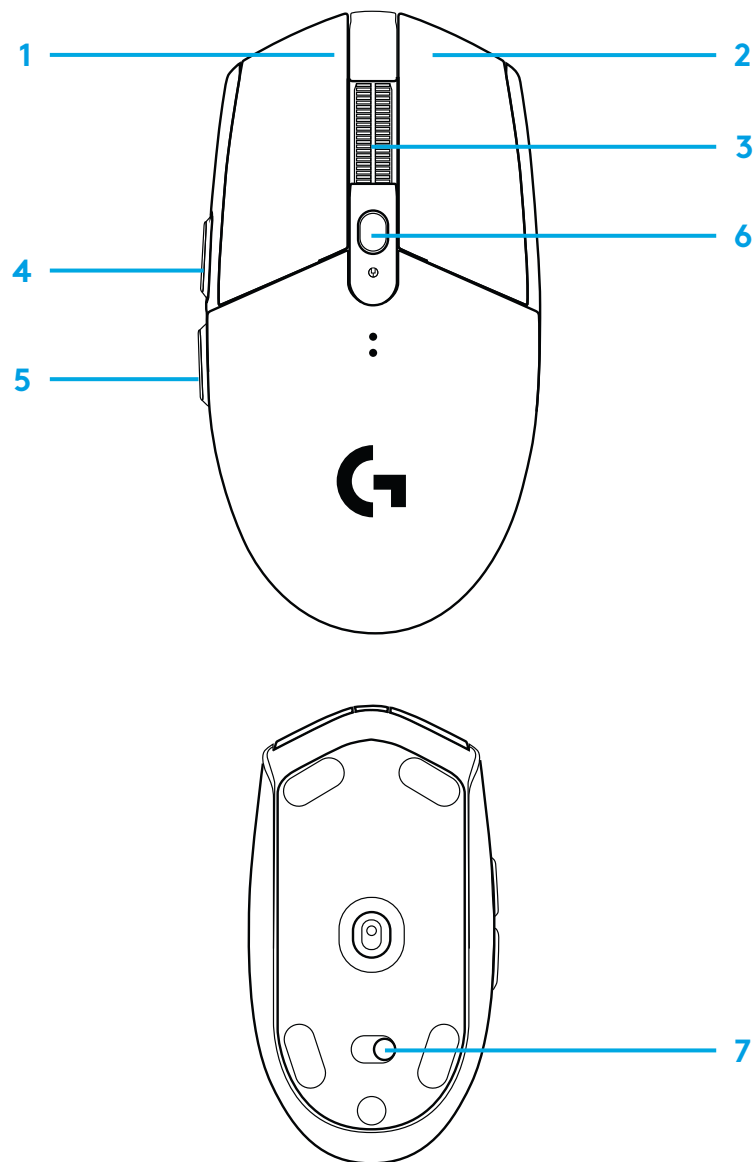
## 提示:

- 为减轻鼠标重量, 可使用 AA 锂电池 (需另购)。
- 请将鼠标和接收器与路由器或其他 2.4GHz 无线设备之间的距离保持在 2 米以上, 以降低环境干扰。
- G304 / G305 的无线连接范围可达 10 米。若欲在嘈杂无线环境中保证鼠标的优良性能, 建议将接收器和鼠标之间的距离保持在 20 厘米之内。



## 6 个完全可编程按钮

- 1 左键 (按钮 1)
- 2 右键 (按钮 2)
- 3 滚轮点击 (按钮 3)
- 4 前进 (按钮 4)
- 5 后退 (按钮 5)
- 6 DPI 循环 (按钮 6)
- 7 开启/关闭开关 (位于鼠标底部, 不可编程)



## LED 指示灯

### 电池使用时间

闪烁红色: 电量 <15%

### DPI

黄色: 1 级 - 400 DPI

白色: 2 级 - 800 DPI (默认)

橙色: 3 级 - 1600 DPI

品红色: 4 级 - 3200 DPI

蓝色: 5 级 - 6400 DPI (5 级只能通过软件激活)

### 模式

青色: 性能模式 (默认)

绿色: 耐久模式 (只能通过软件激活)。

### 提示:

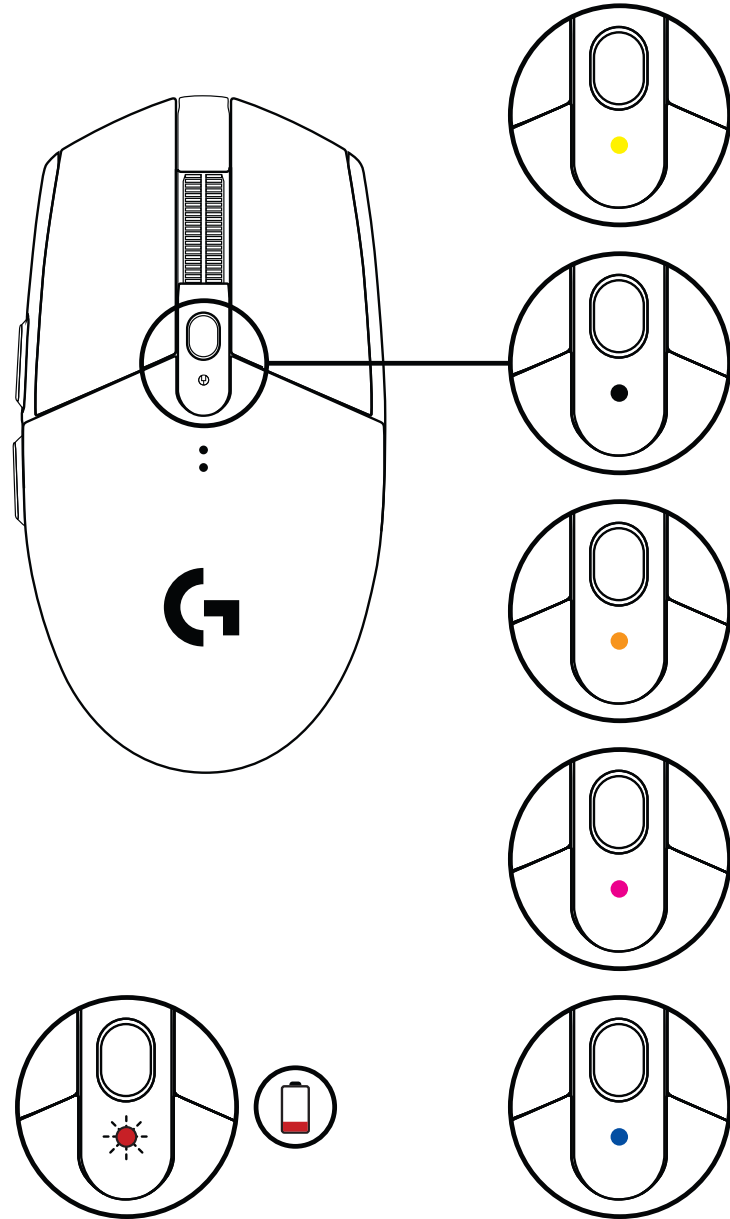
- 激活耐久模式会降低跟踪性能, 但可延长电池寿命。

## G HUB 软件

可以使用 G HUB 自定义板载配置文件。设置包括按钮编程、报告速率、性能/耐久模式和跟踪表现。G304 / G305 可以设置多达 5 个 DPI 设置。

默认情况下, G304 / G305 的设置为:

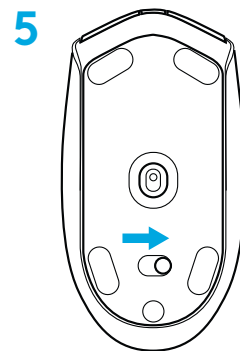
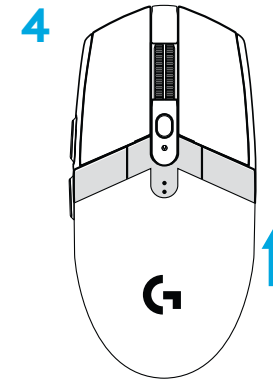
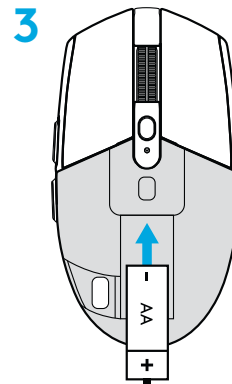
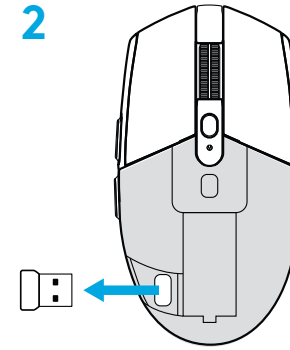
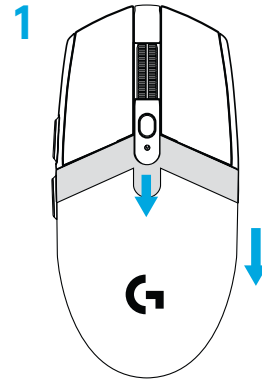
- DPI: 400/800/1600/3200
- 报告速率: 1 毫秒
- 性能模式



版权所有 ©2020 Logitech。罗技、罗技 G、Logi、Logitech、Logitech G 及其各自标志为 Logitech Europe S.A. 和/或其在美国及其他国家附属公司的商标, 并或已注册。所有其他商标均是其各自所有者的财产。罗技对于本手册中可能出现的任何错误不承担任何责任。本手册中包含的信息如有更改, 恕不事先通知。

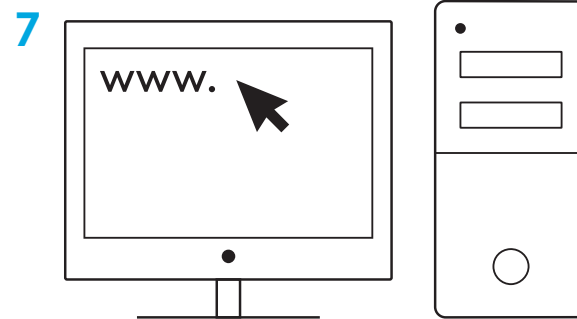
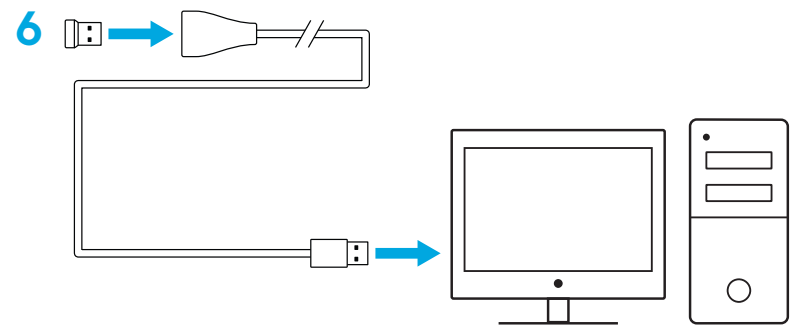
# 設定說明

- 1 壓按電池室外蓋並向外拉，將其取下
- 2 取下接收器
- 3 插入電池
- 4 蓋上電池室外蓋。
- 5 透過滑鼠底部的電源開關，確認開啓滑鼠電源



6 建議：將接收器插入到接收器延長線。將延長線插入到 USB 連接埠。  
或者，將接收器直接插入到 USB 連接埠。

7 下載 G HUB 軟體

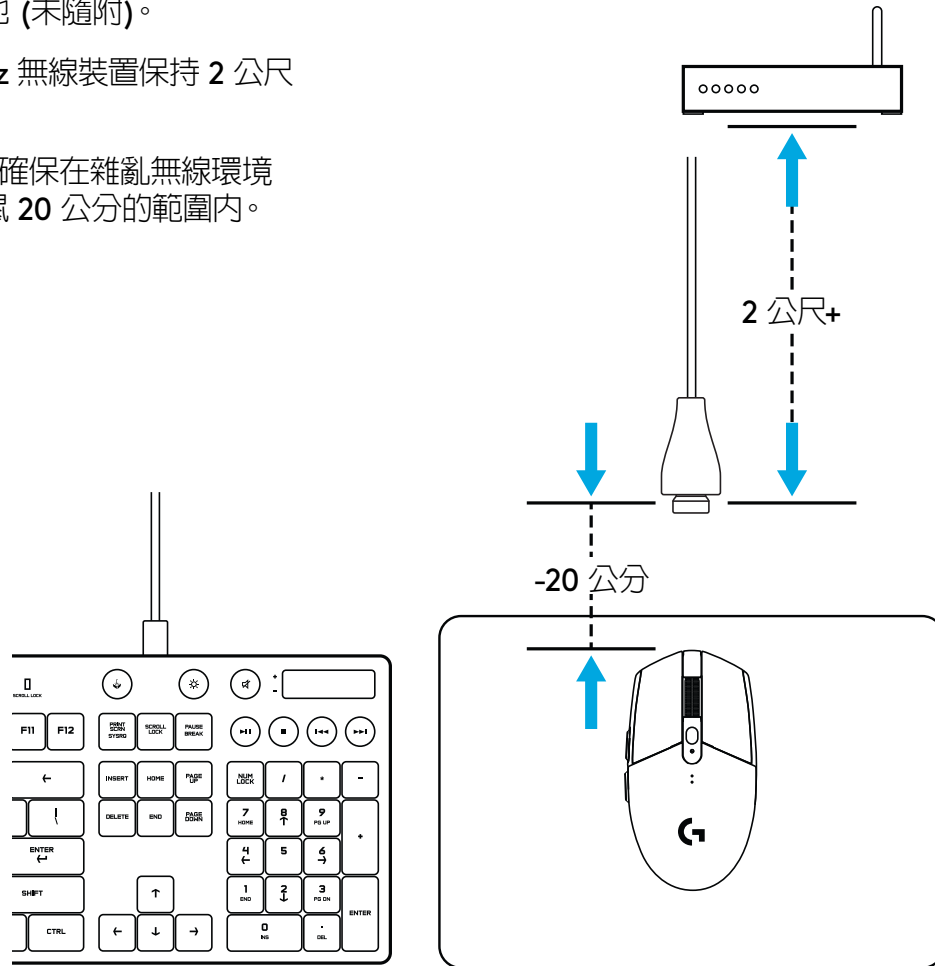


[logitechG.com/GHUB](http://logitechG.com/GHUB)

[logitechG.com/support](http://logitechG.com/support)

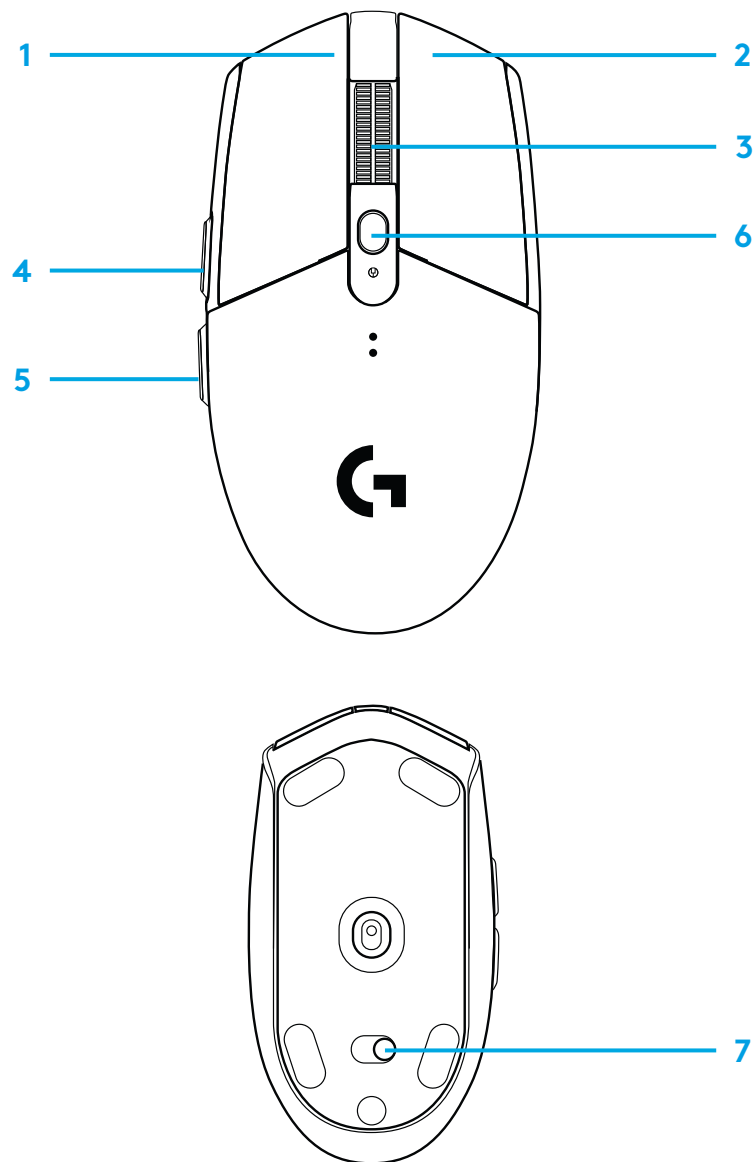
## 提示：

- 若要讓滑鼠更輕，可以只使用一個 3 號 AA 電池 (未隨附)。
- 請使滑鼠和接收器與無線路由器或其他 2.4GHz 無線裝置保持 2 公尺以上的距離，以將環境干擾降至最低。
- G304 / G305 的無線範圍最遠可達 10 公尺。為確保在雜亂無線環境中的最佳效能，建議您將接收器保持在距離滑鼠 20 公分的範圍內。



## 6 個可完全自訂的按鈕

- 1 左鍵 (按鈕 1)
- 2 右鍵 (按鈕 2)
- 3 滾輪按下 = (按鈕 3)
- 4 向前 (按鈕 4)
- 5 向後 (按鈕 5)
- 6 DPI 循環切換 (按鈕 6)
- 7 開啓/關閉開關 (位於滑鼠底部, 不可自訂)





## LED 指示燈

### 電池壽命

閃爍紅色: 電池電量 <15%

### DPI

黃色: 步進 1 - 400 DPI

白色: 步進 2 - 800 DPI (預設)

橙色: 步進 3 - 1600 DPI

洋紅色: 步進 4 - 3200 DPI

藍色: 步進 5 - 6400 DPI (步進 5 只能透過軟體啟用)

### 模式

青色: 效能模式 (預設)

綠色: 耐久模式 (只能透過軟體啟用)

### 提示:

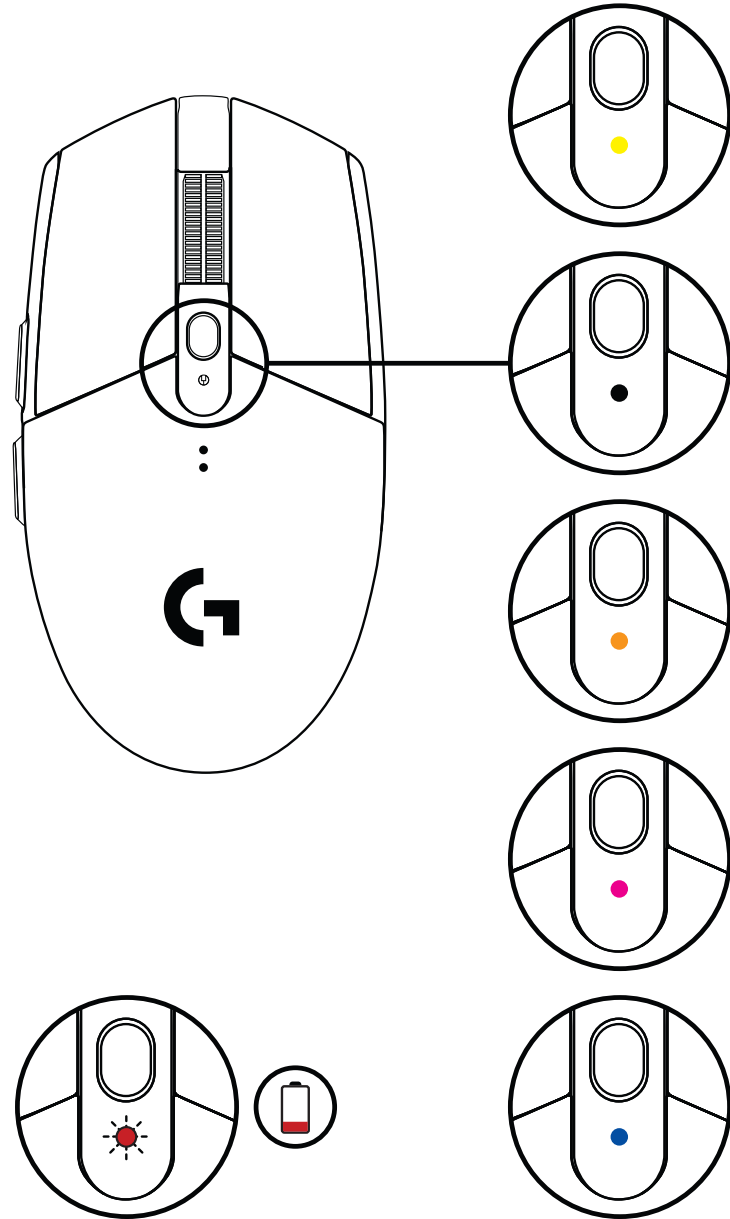
– 啟用耐久模式會降低追蹤效能但增加電池使用壽命。

## G HUB 軟體

您可以使用 **G HUB** 軟體來自訂內建設定檔設定。這些設定包括按鈕自訂、回報速率、效能/耐久模式和追蹤行為。**G304 / G305** 最多可以有 5 個 DPI 設定。

在預設情況下，**G304 / G305** 使用下列設定：

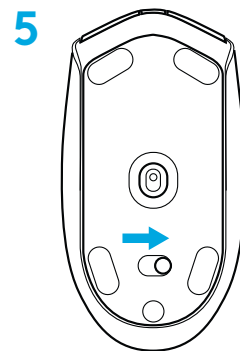
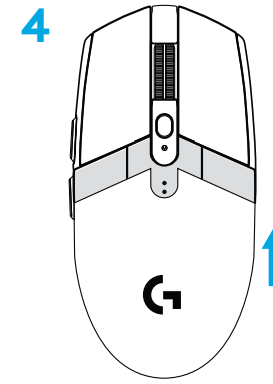
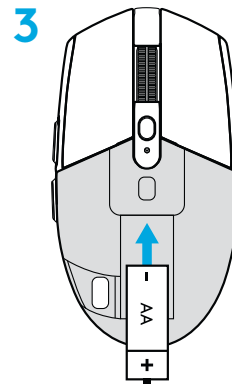
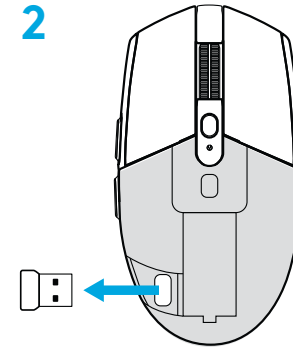
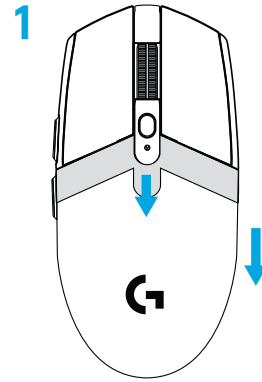
- DPI: 400/800/1600/3200
- 回報速率: 1 毫秒
- 效能模式



版權所有 ©2020 羅技。羅技、Logitech G、Logi 和其個別標誌為 Logitech Europe S.A. 及其附屬公司在美國和其他國家的商標或註冊商標。其他非羅技商標，仍由各該商標所有人擁有其權利。羅技對於本手冊中可能出現的任何錯誤不承擔任何責任。本手冊中包含的資訊如有更改，恕不事前通知。

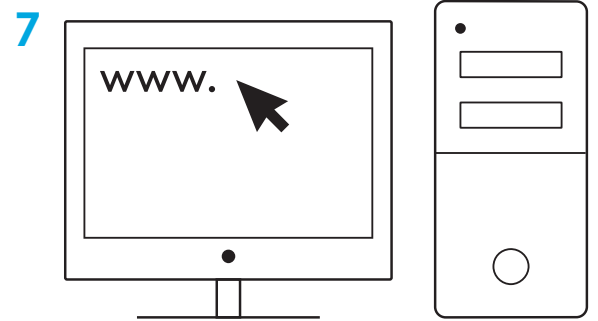
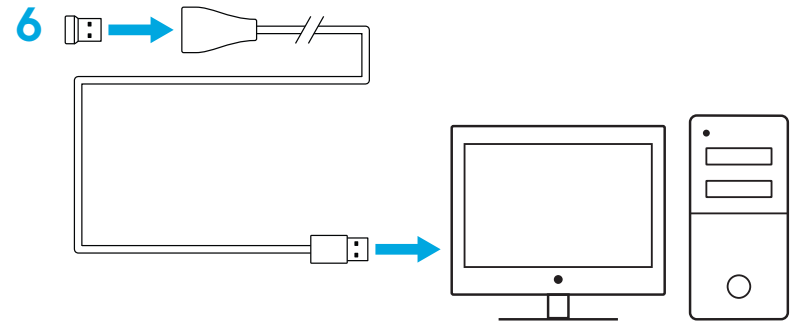
# 설치 지침

- 1 배터리 커버 위쪽을 눌러 아래로 당겨 커버를 제거합니다.
- 2 수신기를 제거합니다
- 3 배터리를 넣습니다
- 4 배터리 커버를 닫습니다.
- 5 마우스 바닥에 있는 스위치를 사용해 마우스를 켭니다.



6 권장 사항: 수신기를 수신기 연장 케이블에 끼웁니다. 연장 케이블을 USB 포트에 끼웁니다. 수신기를 USB 포트에 바로 끼워도 됩니다.

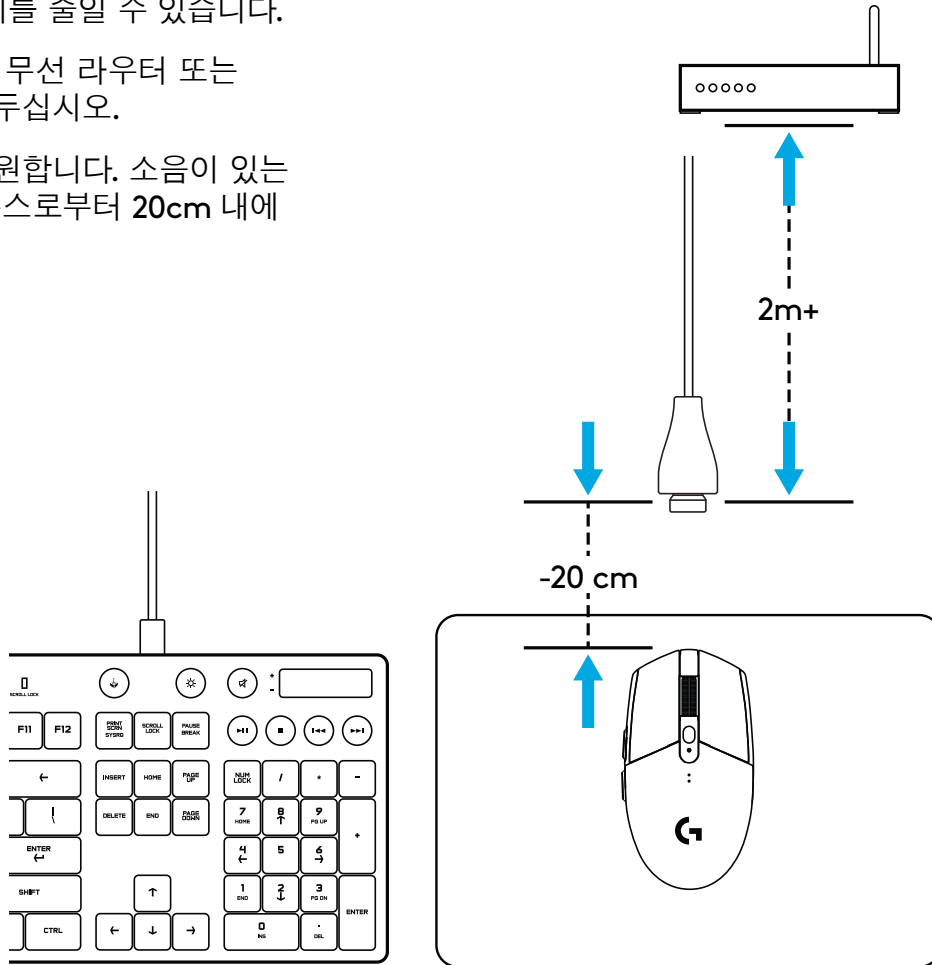
7 G HUB 소프트웨어 다운로드



[logitechG.com/GHUB](http://logitechG.com/GHUB)  
[logitechG.com/support](http://logitechG.com/support)

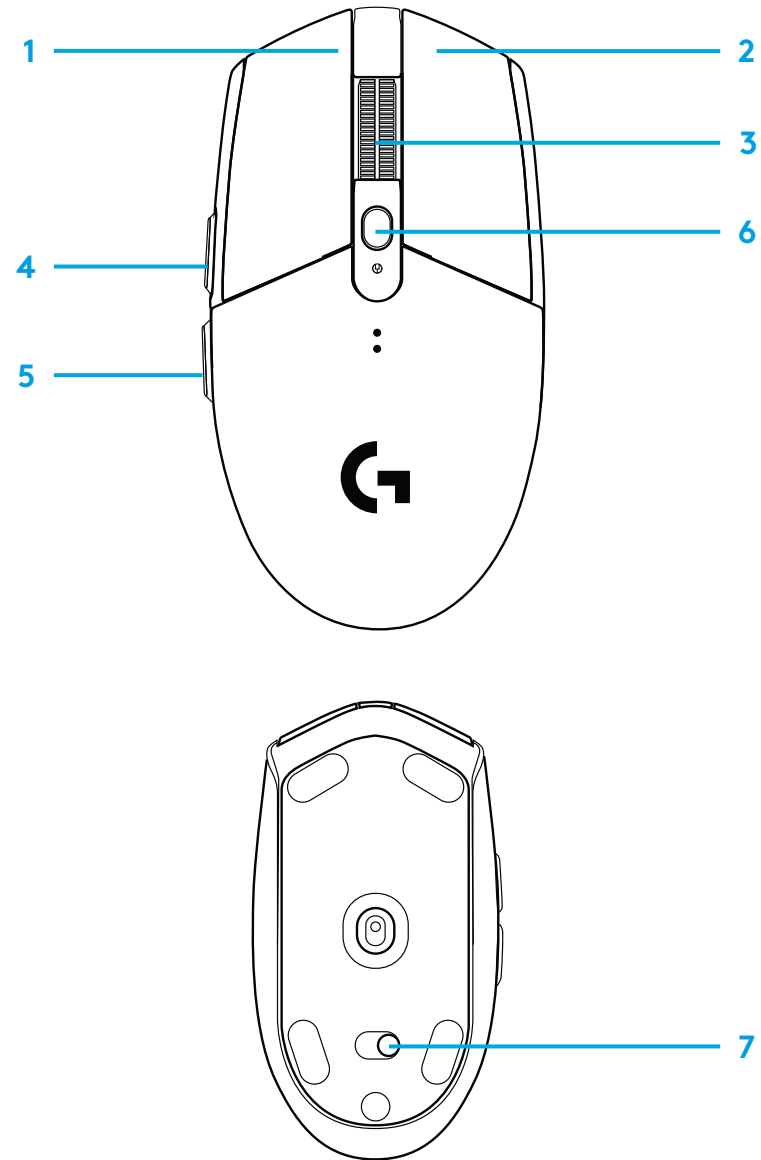
## 팁:

- 리튬 AA 배터리(미포함) 사용 시 마우스의 무게를 줄일 수 있습니다.
- 환경 잡음을 최소화하려면 마우스와 수신기를 무선 라우터 또는 다른 2.4GHz 무선 장치로부터 2m+ 떨어뜨려 두십시오.
- G304 / G305는 최대 10미터의 무선 범위를 지원합니다. 소음이 있는 무선 환경에서 최적의 성능을 구현하려면 마우스로부터 20cm 내에 수신기를 유지하는 것이 좋습니다.



## 6개의 프로그래밍 가능한 버튼

- 1 왼쪽(버튼 1)
- 2 오른쪽(단추 2)
- 3 휠 클릭(단추 3)
- 4 앞으로(단추 4)
- 5 뒤로(단추 5)
- 6 DPI 순환(버튼 6)
- 7 켜기/끄기 스위치(마우스 바닥, 프로그래밍 불가)



## LED 표시등

### 배터리 수명

깜박이는 빨간색: 배터리 <15%

### DPI

노란색: 1단계 - 400 DPI

흰색: 2단계 - 800 DPI(기본)

주황색: 3단계 - 1600 DPI

마젠타: 4단계 - 3200 DPI

파란색: 5단계 - 6400 DPI (5단계는 소프트웨어로만 활성화 가능)

### 모드

사이언: 퍼포먼스 모드(기본)

녹색: 내구성 모드 (소프트웨어로만 활성화 가능)

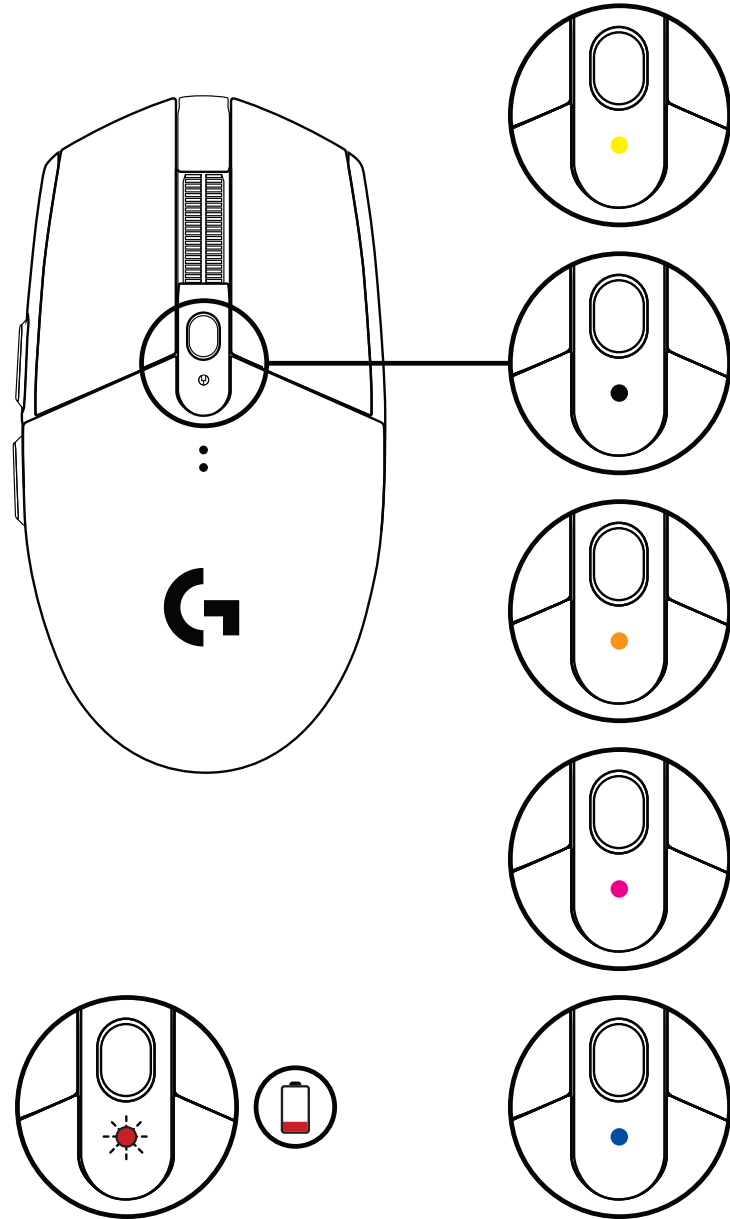
### 팁:

## G HUB 소프트웨어

G HUB를 사용하여 온보드 프로파일을 원하는 대로 설정할 수 있습니다. 설정 대상은 버튼 프로그래밍, 보고율, 퍼포먼스/내구성 모드, 및 트래킹 거동 등입니다. G304 / G305는 최대 5개의 DPI 설정이 가능합니다.

G304 / G305의 기본 설정은 다음과 같습니다.

- DPI: 400/800/1600/3200
- 보고율: 1ms
- 성능 모드



©2020 Logitech. Logitech, Logitech G, Logi 및 그 각각의 로고는 미국과 기타 국가에서 Logitech Europe S.A. 및/또는 그 계열사의 상표 또는 등록 상표입니다. 그 밖의 모든 상표는 해당 소유자의 자산입니다. 로지텍은 이 설명서에 명시된 어떤 오류에 대해서도 책임지지 않습니다. 이 설명서에 있는 정보는 예고 없이 변경될 수 있습니다.



©2020 Logitech. Logitech, Logitech G, Logi, 罗技、罗技G and their respective logos are trademarks or registered trademarks of Logitech Europe S.A. and/or its affiliates in the U.S. and other countries. All other trademarks are the property of their respective owners. Logitech assumes no responsibility for any errors that may appear in this manual. Information contained herein is subject to change without notice.

版权所有 ©2020 Logitech。罗技、罗技 G、Logi、Logitech、Logitech G 及其各自标志为 Logitech Europe S.A. 和/或其在美国及其他国家附属公司的商标，并或已注册。所有其他商标均是其各自所有者的财产。罗技对于本手册中可能出现的任何错误不承担任何责任。本手册中包含的信息如有更改，恕不事先通知。

WEB-621-001066.003